

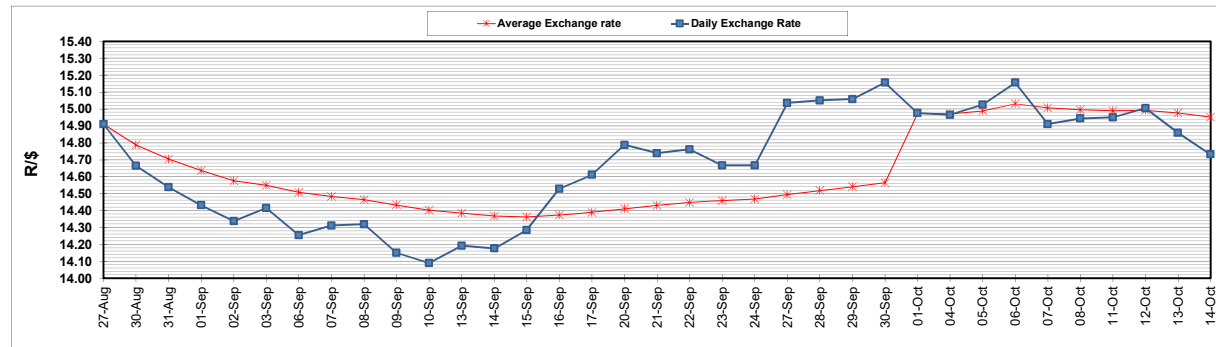
	PETROL 95 ULP	PETROL 93 ULP & LRP	DIESEL 0.05%	DIESEL 0.005%	ILL. PAR.
GAUTENG PUMP PRICE (SA c/l) AS FROM 06/10/2021	1,833.000	1,811.000	-	-	-
WHOLESALE PRICE (SA c/l) AS FROM 06/10/2021	-	-	1,571.780	1,575.180	980.488
SINGLE NATIONAL MAXIMUM RETAIL PRICE	-	-	-	-	1,240.000
BASIC FUEL PRICE - 14/10/2021 (SA c/l)	934.385	920.204	919.504	923.158	907.778
PRESS RELEASE CONTRIBUTION TO BFP 06/10/2021 - 14/10/2021 (SA c/l)	818.310	806.310	771.630	775.030	767.128
UNIT OVER/(UNDER) RECOVERY - 14/10/2021 (SA c/l)	(116.075)	(113.894)	(147.874)	(148.128)	(140.650)
AVERAGE BASIC FUEL PRICE 01/10/2021 - 14/10/2021	916.387	902.541	905.453	909.070	899.560
AVERAGE UNIT OVER/(UNDER) RECOVERY 01/10/2021 - 14/10/2021	(98.437)	(95.691)	(141.323)	(141.540)	(142.032)

ANALYSIS MOVEMENT OF AVERAGE OVER/(UNDER) RECOVERY

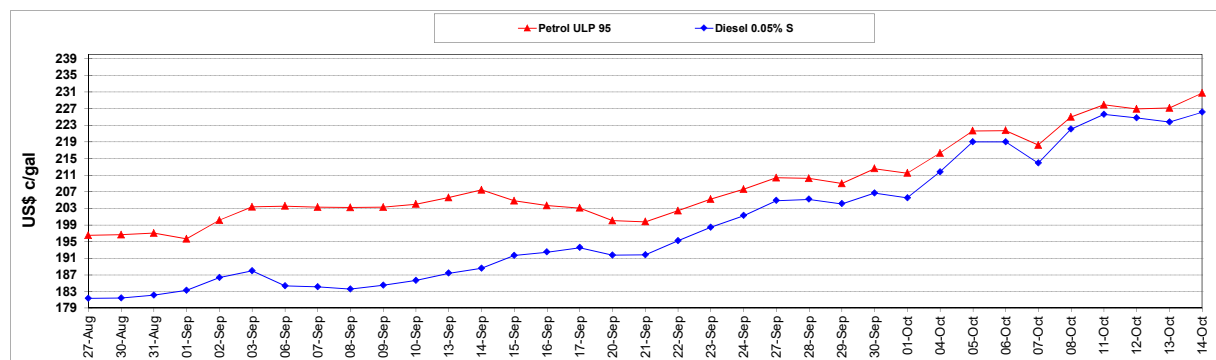
	PETROL 95	PETROL 93	DIESEL 0.05%	DIESEL 0.005%	ILL. PAR.
- MOVEMENT IN INTERNATIONAL PRODUCT PRICES	(74.719)	(72.331)	(117.888)	(118.011)	(118.749)
- MOVEMENT IN EXCHANGE RATE	(23.718)	(23.360)	(23.435)	(23.529)	(23.283)
AVERAGE UNIT OVER/(UNDER) RECOVERY 01/10/2021 - 14/10/2021	(98.437)	(95.691)	(141.323)	(141.540)	(142.032)

R/\$ EXCHANGE RATE - (R/\$14.7320 - 14/10/2021)

EXCHANGE RATE USED IN BASIC FUEL PRICE



INTERNATIONAL PRODUCT PRICES OF BASKET USED IN BASIC FUEL PRICE



BASIC FUEL PRICE IN SA CENTS PER LITRE

